



Switching Power Supply	04
Interfacing Module (Relay Card)	04
UPS	04
Industrial Control Panel	04
Gear Motor	04
Solar Module	05
Solar Inverter	05
Solar Pump	05

HUST

CNC Controller	10
----------------	----

MIRLE

Injection Molding Machine Controller	10
Energy Saving System for IMM	10
Position Transducer-GEFRAN	10
Pressure Transducer-GEFRAN	11
Hydraulic Pump	11

Nabtesco

Component Type	14
Gearhead Type	14
Servo Actuator - RV AF	15

Schneider Electric

Switchgear Products	15
---------------------	----

DELTA

AC Drive	05
PLC	06
HMI/MMI	06
AC Servo Motor	06
Temperature Controller	06
Counter/Timer/Tachometer	07
Communication Module	07
UPS	07
Rotary Encoder	14

Nidec

Speed Reducer	11
Flexwave	11
Coronex	11
AGV (Automatic Guided Vehicle) S-CART	12

ADVANTECH

CNC Controller	10
SCADA	12
Industrial Panel PC	13
Industrial Embedded Box PC	13
Distributed I/O Modules & Controllers	13
Data Acquisition & Control Cards	13
Industrial Communication	14

ATA

Stepper Driver	15
----------------	----

HIWIN®

LM Guide	12
Ball Screw	12
Linear Motor	12

Panasonic

AC Servo Motor	06
AC Gear Motor	07
Brushless Motor	07
Sensors	07
Vision System	08
Laser Marker	09

TRIO MOTION TECHNOLOGY

Motion Controller	12
-------------------	----

Samagawa

Rotary Encoder	14
Resolvers	14
2 & 5 Phase Step Motor	15

Baumer

Sensors	07
Vision Sensor	08
Digital Industrial Camera	09
Pressure Transmitter	09
Level Sensor	09
Rotary Encoder	14

COGNEX

Barcode Readers	08
Barcode Verifiers	08
Vision Sensor	08
2D & 3D Vision System	08



SWITCHING POWER SUPPLY

- Fully Automated Production Line
- **Single Output** : 5V, 12V , 24V, 48V, Dual & Multi Output Series Available
- Panel & Din-rail mount Series available
- Overload & Short circuit protection
- 100% full load Burn-in test
- High Efficiency
- Low Ripple & Noise
- High Quality & Reliability
- All Models available Ex-stock



INTERFACING MODULE (RELAY CARD)

- Relay Module with 8/4 miniature relays
- With Base (Relay-Pluggable)
- Coil Voltage 24VDC
- Jumpers are provided for selection between positive looping/negative looping
- Mounting DIN 35 carrier rail



UPS

- **Range** : 0.6 to 30KVA
- On-line UPS solutions
- Microprocessor Controlled High Frequency PWM Technology
- 100% unbalanced load suitability
- Local and remote Emergency Power off (EPO) function
- UPSentry@ Network
- Multi-Language and user-friendly graphic LCD Screen
- Mult CPU digital control to minimize electronics components
- Intelligent multi-speed cooling fan control
- In-built Alarm system



INDUSTRIAL CONTROL PANEL

Types of Panel

- Design & Build as per customer requirement
- Automation control panel with system integration of PLC, HMI, VFD, AC Servo
- Instrumentation panel
- Starter Panels DOL/STAR-DELTA/ATS
- Automation Panel for Pressure Boosting Application
- Power distribution panel, PCC, MCC, APFC
- Bus Duct Panel • Feeder Panel • Synchronizing Panel
- Design with proper cooling arrangement
- High quality switch gears & automation components
- MS/SS/ABS plastic enclosure with different industrial IP ratings IP44, IP55, IP65

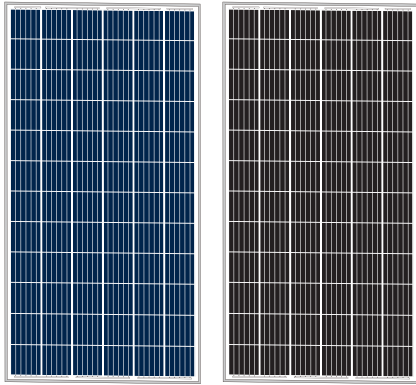
Key Strengths

- Complete Industrial Solution
- High Quality & Reliability
- Excellent workmanship
- Aesthetic & Ergonomic Design
- Innovative concepts
- Skill Engineering
- High Product Value
- Customer Satisfaction



GEARED MOTOR / GEAR BOX

- Medium Gear Motor : 100W~7500W
- Micro Gear Motor : 6W~250W
- R-F-K-S Series Gear Motor : 0.12KW~11KW
- Spur & Planetary Gearbox for Servo
- Brake Available
- High Durability
- High Efficiency
- High Speed Ratio



SOLAR MODULE

- **150MW Start-Of-Art Fully Automatic Manufacturing Facility**
- High Power Module using Mono/Poly-crystal silicon solar cell
- Bypass diode to minimize power drop caused by shade
- Anti-Reflection coating and BSF (back surface field) Structure to improve cell conversion efficiency
- White Tempered Glass, EVA resin and weatherproof film along with AL frame for extended outdoor use
- 100% testing of all modules

LIMITED WARRANTIES - 25 YEARS

- 5 Years product warranty
- 90% of the specified minimum output of the module for a 10 years period
- 80% of the specified minimum output of the module for a 25 years period



SOLAR INVERTER (GRID-TIED INVERTER) - DELTA

TRANSFORMER & TRANSFORMERLESS TECHNOLOGY

- **Product Range** : 2.5kw to 100kw
- Transformer with peak efficiency (96.0%)
- Transformerless with peak efficiency (98.5%)
- Isolation of primary and secondary circuit
- Wide operating temperature ranges : -25°C to +70°C
- Full power up to 57°C (without derating)
- Rs485 (EIA485) communication interfaces
- Intelligent MPP tracking
- Suitable for indoor and outdoor applications (IP65)



SOLAR INVERTER - SOFAR

- **Product Range** : 1kw to 50kw
- 7 years warranty
- Zero export (Optional)
- Single and Dual MPPT for optimum generation
- Maximum 98.2% Inverter Efficiency
- Remote Monitoring • 4" LCD display
- Safety Protection - Anti islanding, Ground Fault monitoring
- Anti Reverse Power Controller • IEC Certification - as per MNRE



SOLAR PUMP

IN-HOUSE MANUFACTURING OF SOLAR PANEL, SOLAR CONTROLLER & SOLAR PUMP

- **AC Pumps Range** : 0.5 hp to 20 hp
- **DC Pumps Range** : 1 hp to 5 hp
- **DC Helical Rotor Pumpset Range** : 1 hp
- STC & MNRE Approved Solar Pump
- NABARD Registered Solar Pump



VARIABLE FREQUENCY AC DRIVE (VFD)

- **Micro Drive** : 40W to 400W
- **1 Ph / 230V** : 0.05 HP to 3 HP
- **3 Ph / 415V** : 0.5 HP to 600 HP
- V/F, Sensorless Vector, Flux Vector, Torque Control Modes
- FOC Control Mode for IM & PM motor
- Supports various network protocols
- Built in EMI filter & PID Feedback Control
- Inbuilt PLC Function*
- Auto Energy Saving Function
- Wide range of models to fit different industries
- Special Drive for Elevator, Elevator Door, Tread mill, Textile Crane, CNC Spindle, Fan & Pump Application

PLC



- PLC supports 256 DI/DO / 512 DI/DO /1024 DI/DO
- Supports Modbus ASCII/RTU : RS232/RS485 & Modbus TCP/IP / Ethernet I/P : Ethernet
- Support 200KHz HSC & 200KHz : PTO
- RTC, Floating instruction & PID auto tuning function
- Special Module of Analog, Temperature, Position, Communication port, BAC net, Load cell & Remote IO modules (Devicenet and Ethernet)
- Pulse type motion controller (2/3 axes) & CANOpen/EtherCAT motion controller module

MODULARIZED MID RANGE PLC FOR PROCESS INDUSTRIES

- Highly integrated software ISPSoft : 5 languages (IEC-61131-3)
- Enhanced flexibility : Max. 100m between 2 local extension racks
- Improved maintainability : Hot-swapping function keeps the system running
- Utilizes dual-core multi-tasking processor Execution Speed:0.3ms/1k step
- Max DIO : 4,352 points, AIO : 544 & RIO : Max. 125, 440 DIO / 3,920 AIO
- CPU built-in with fully isolated RS-232/422/485, Mini-USB, Ethernet, SD Card 1.0
- AIO modules, DIO modules, Temperature modules, Network modules, Pulse-train, DMCNET/EtherCAT motion control modules, Devicenet & Ethernet based RIO modules
- CPU, Backplane, Powersupply, Communication Redundancy supported

HMI



- Text Panel with 2/4/8 line with max.24 Function keys
- Touch screen available in 4.3", 5.7", 7", 10.1" 12" & 15" with TFT LED display
- High resolution with 65536 color
- 3-communication port (RS232/RS485/RS422) & Ethernet port
- Non editable history file & PDF writer
- Support USB Client for High speed download/upload
- Support USB Host for USB flash drive, Printer, Mouse and Barcode reader
- VNC viewer software (PC + Android application) for remote communication
- E-Server software for Data logging application
- Supports Operation Log Viewer/user level password setting
- Ethernet Model supports FTP & Alarm Email Function (SSL security)
- Supports Text Panel with Inbuilt PLC

AC SERVO MOTOR



- Rated Output : 10 W to 22.0 kW
- Rated Torque : 0.032 Nm to 140.0 Nm
- 23-bit Absolute / Incremental Encoder
- Position / Internal Position / Speed and Torque Control Modes
- 3.2KHz Velocity Response Frequency
- Maximum 6500 RPM
- 8Mpps Exclusive Interface for Line driver Pulses
- Fit gain tuning function
- Full Close control with linear scale or external encoder
- Quadrant projection suppression function
- With / Without Holding Brake
- Built-in Electronic cam (E-CAM) function
- Modbus, EtherCAT, R-TEX Communication

TEMPERATURE CONTROLLER



- PID, ON/OFF, Manual & PID Program control modes (Ramp/Soak)
- Universal Input
- Relay / Voltage pulse / Linear Voltage & Current Output
- Various Panel size LCD & 7 segment display option
- Dual Loop Output Control (Heating/Cooling Control)
- Auto tuning function • Blind Temp. Controller with dual O/P
- Special module for Valve Control • Retransmission Output
- Parameters down load via PC software
- RS-485 MODBUS communication
- Password Protection & Key lock function

COUNTER/TIMER/TACHOMETER



- 3 IN 1 • Mixed Timer + Counter Function
- Decimal Point setup available • 6 digit LCD display
- Max.speed of the counter : 10kbps • DIP switch for quick setup change
- “Reset” & “Lock” key available for convenient use
- 12V power supply for internal & external sensor
- NPN & PNP input signal available • Relay & Transistor based output
- Pre-scale function displays input concrete function
- Optional RS485 communication



COMMUNICATION MODULE

- Convert RS-232 signals to RS-485/RS-422 differential voltage lines
- DeviceNet to RS-485 Converter • CANopen to RS-485 Converter
- Ethernet IP Gateway Converter • MODBUS IP Gateway Converter
- USB to RS-485 Converter • Support RS-485/RS-422 communication
- Various installation ways • Handle & isolate signal well
- Maintain data transmission correctly
- To decrease damage by using transmission wire
- Power & Shortage protection • Compact size with easy to Install



UPS

- Range : 0.6 to 4000 KVA - Online double Conversion
- Microprocessor Controlled, High Frequency PWM Technology
- Input Power Factor Correction up to unity
- High AC to AC Efficiency • Widest Input Voltage Range
- Lightning and Surge Protection • Alarms & Indications
- UPSantry@ Network • SNMP Management Capability



AC GEAR MOTOR

- 1 Ph / 220V : 6W to 90W
- 3 Ph / 200V : 25W to 90 W
- Reduction ratio : 1/3 to 1/180
- Induction Gear Motor • Reversible Gear Motor
- Variable Speed Gear Motor • Compact Size with powerful output
- High torque with low speed • High Braking & holding torque
- Continuous duty rating • Built In thermal overload protection
- Motors with lead wires or Terminal box (Sealed connector)



BRUSHLESS MOTOR

- POWER RANGE : GP 30W to 130W
GV/KV 30W to 130W & KV 50W to 750W
- Rated speed: 3000 RPM & Max 4000RPM
- Standard and high torque gear head can be use
- Full time sine-wave drive with original CS sensor
- Speed control (0~5V DC) • 4 Internal speeds available
- Programable DI / DO • Constant torque at 0~3000 RPM
- Highly precise speed control with no slip
- Low vibration, Low noise • Compact size

SENSORS



- Photoelectric Sensor
- Micro Photoelectric Sensors
- Digital Color Mark Sensor
- Inductive Proximity Sensors
- Digital Laser Sensor
- Digital Fiber Sensor
- Area Sensor
- Static Control Device (Static Remover/Ionizer)
- Safety Light Curtain
- Laser Scanner
- Digital Pressure Sensor
- Digital Flow Sensor
- Measurement Sensors



- Particular Use Sensor
- Ultrasonic Sensor
- Capacitive Proximity Sensor



VISION SYSTEM

- Advanced vision system with high end performance
- 0.3M, 2M, 4M gray / color camera options
- Dedicated stand-alone controller with upto 4 camera connection
- All major inspection functions / checkers available with pre-processing analysis
- Reading and verification of 1D, 2D, Pharmacode etc...
- Advance OCR/OCV tool for reading and verification of text
- Connects to a variety of PLCs
- Ultra high-speed data transfer by gigabit Ethernet



BARCODE READERS

- Variety of Options available for Fixed-Mount, Handheld and Mobile Solution
- Can Read any Symbologies of 1-D Codes, 2-D Codes, Postal Codes, DPM
- Patented Technology for Optimal Performance and Tractability
- Advance Functions like 1D Max, Hotbars, 2D Max, PowerGrid, HDR, HDR+, 1-D/2-D Auto-Discrimination, Multi-code
- Modular Design for Maximum Flexibility, Liquid lens & Easy Setup Tools & Operation



BARCODE VERIFIERS

- High-performance code quality verifier
- Generate reports to demonstrate compliance within industry standardization guidelines
- Packed with powerful lighting options, robust grading algorithms, a high-speed processing engine, and a high-resolution camera
- Only DPM verifier on the market with 30, 45, and 90 degree lighting options
- Fast, accurate algorithms provide reliable and repeatable results



VISION SENSOR

- Proven, reliable Cognex In-Sight vision tools
- Compact, modular design with field changeable, integrated optics and lighting
- Autofocus lens eliminates the need to manually refocus or adjust the mounting height of the sensor during line changeovers
- Single-cable Power over Ethernet (PoE) models simplify installation
- Monochrome and color image models with Flexible Mounting Configurations



2D & 3D VISION SYSTEM

- Provide reliable, repeatable performance for the most challenging applications
- Industrial grade with a library of advanced vision tools
- High speed image acquisition and processing
- Exceptional application and integration flexibility
- Industry-leading Vision Technology includes Deep Learning, PatMax RedLine™, PatMax® 3D, HDR+, SurfaceFX™
- Vision System with upto 12M monochrome and color options



VISION SENSOR

- Wide variety of feature checks with one single sensor
- Presence and completeness checks
- Determination or inspection of object position and orientation
- Reading and verifying human-readable imprints (OCR / OCV)
- Reading and checking matrix codes and barcodes including GS1 codes
- Compact, industry-suited IP 67 or IP 69K metal housing
- Wide range of connection options via digital I/Os and Ethernet

DIGITAL INDUSTRIAL CAMERA



- Excellent image quality and high frame rates, a camera design which enables rapid and flexible integration
- Wide variety of cameras in color and monochrome versions as well as resolution ranging from VGA to 25 megapixel
- The cameras are based on innovative technologies such as CCD & CMOS and include all relevant standard interfaces (GigE Vision®, USB3 Vision™ and Camera Link®)

PRESSURE TRANSMITTERS



- Robust Stainless Steel Housing
- Wide Pressure Range from -1 to 1000Bar
- Fully welded and compact design
- Excellent Price / Performance Ratio
- Universal Output Signal 0 - 10V or 4 - 20mA & HART
- PNP Threshold switching output
- Support Media temperature upto 150 °C
- High temperature resistance for SIP and CIP processes
- Flush Diaphragms and Non Flush Design
- Optional Display Facility
- 3A, FDA, EHEDG, ATEX, Approvals

LEVEL SENSOR



- Safe Detection of Liquid, Bulk Solid, Powder, Sticky Media
- Capable of differentiate between Foam & liquid, Oil & Water
- Alternative of vibrating forks type level sensors
- Compact Stainless steel housing, Hygienic Design
- Support Upto Max. Process Temperature -40 – 200 °C
- Level Measurement of Conductive material
- Output Signal: 4 - 20mA, PNP / NPN, NO / NC
- Configurable Measuring Range
- Available with 20Cm to 300Cm sensing rod length
- Food Compatible, Hygienic Design.
- Wetted parts in acid-proof, stainless steel and PEEK material
- Variety of Process Mounting Connections
- 3A approved / FDA and EHEDG compliant

LASER MARKER



FAYb LASER MARKER : 1.06 μm wavelength

- LP-V Series High speed marking at 700 cps, scanning speed: max. 12000 mm/sec., line speed: 240 m/min or less
- Energy saving design, complete air-cooling, long life, space saving design
- LP-S500W A new standard black laser annealing
- Flexibility in work distance $\pm 15\text{mm}$
- IP67G fan less head
- Simple mounting removable fiber unit

Co₂ LASER MARKER : 10.6 μm wavelength

- LP-310 New entry level model for Laser Marking
- LP-400 Series high grade model
- Standard and tower head model available
- Head rotation upto 350° allows flexible installation option

CNC CONTROLLER

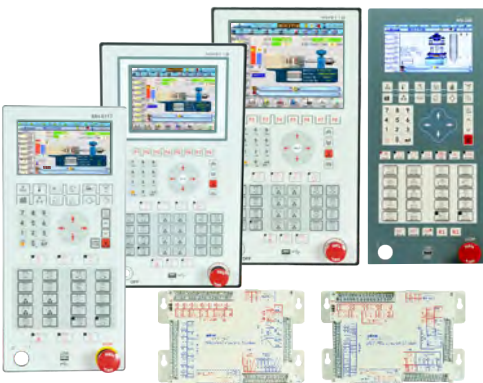


- 1~6 Axes
- Type - 2+1 Turning or 3+1 Milling Controller
- 7" Or 8" Colour Display
- Inbuilt I/O (20I X 16O) x 2 ,Expansion I/O Possible
- Ethernet, RS485 Port
- Absolute Encoder Connectivity
- 256MB SD Card Or 1GB CF Cards
- USB Port
- Macro Command
- Back Ground Editing
- Gantry function for Axis pair
- Linear or Rotary Axis Selection



- 1 ~ 9 Axis Controller
- 5.7", 8.0" & 10.4" Display
- Graphical simulation & MPG Function
- 48/32 I/O Inbuilt I/O and 192/128 Expansion I/O
- Program memory up to 512 KB (USB 2GB optional)
- RS232 Communication
- Gantry Function
- User can design PLC & Screen program
- User can design program by CAD / CAM
- Macro Command
- NPN - Input type

INJECTION MOLDING MACHINE CONTROLLER



- Dual CPU : ARM or X86 industrial CPU is used in Human-Machine Interface unit and microprocessor with RISC is used in the system unit.
- The product is equipped with USB interface, so that molding parameters can be backed up and the updated program can be download.
- An Ethernet cable is connected between the HMI unit and the system control unit. Its speed is 10 times faster than the traditional RS232.
- Human-machine operating system uses Linux-OS, which not only improves the stability but also supports many kinds of peripheral devices.
- HMI with 7.4" , 8.4" , 10.1" TFT LCD panel, full color screen display, vivid colors, and sharp images. The status animation can be displayed

ENERGY SAVING SYSTEM FOR IMM



- Significant result of Energy Saving (Up to 87%)
- Reliable IMM Control Experience
- High Quality Servo Motor Drive Technology
- Most Energy Saved with Servo Motor
- Safety and Protection is the top priority
- Precise pressure control
- Computer control units Integration

POSITION TRANSDUCER



- LT Series, PKM Series
- LTS Series Stroke 75-900mm
- PKM Series Stroke 100-1500mm
- High resolution output signal
- Easy installation and simple connection



PT - PRESSURE TRANSDUCER

- 0-200 Bar & 0-600 Bar
- 0-10V analog output
- Supply voltage : 24V DC - 3 wire



HYDRAULIC PUMP

- Internal Gear Pump With Axial & Radial Gap Compensation
- Suction & Pressure Port Radial
- Low Noise
- Low Pulsation (Pressure Pulsation ~ 2%)
- Fast Reverse RPM Allowed : Max < 400.
- Intermittent Operation At High Pressure & Low Speed



SPEED REDUCER

- Rated Output : 6Nm to 3000Nm
- Ratio : 3:1 to 100:1
- Very precise performance
- Wide range of Applications in industries
- Inline - Right angle models available
- Easy to mount & assemble
- Life time lubrication free product
- Maintenance free product
- Freedom for 360 °mounting
- Smooth rotation even at very low speed.
- Low operating noise

Application

- Packaging Machines
- Machine Tools & Metal Forming
- Plasma CNC Cutting Machine
- Medicine MFG, Pharma Machines
- General Automation & Testing
- Printing Machines & Conveyors
- Semiconductor & Circuit MFG



FLEXWAVE

Latest Technology development - Strain Wave Gear Technology - consist of Flexible drum and Elastic Bearing

- Near Zero backlash (lost motion < 1 arc min)
- High efficiency ratings
- High reduction ratios in a compact footprint
- Exceptional repeatability and torsional stiffness
- Extremely light weight with superior torque density

Application

- Robotics, Medical Equipment, Semiconductor & Circuit Mfg. Machine Tools or Any Assembly Automation



CORONEX

Technology Development - Epitrochoidal or Cycloidal

- Original tooth profile by Nidec-Shimpo
- High accuracy with zero backlash (<1 arc min)
- Compact Size
- High Rigidity & Torque
- Low Noise
- High Efficiency
- Hollow Input

Application

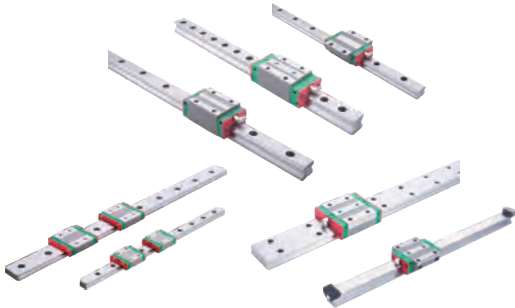
- Robotics, Indexing Table, Machine Tools, Pipe Bending, Wire Forming, Welding Positioner, Automobile Automations, Solar Tracker, Medical Equipment,

AGV (Automatic Guided Vehicle) S-CART



- Perfect for Material movement - Towing, Lifting & Conveying
- Payload capacity - 100, 500, 1000 Kg
- 8 Hour continuous operation (1 Hour charging time)
- Normal Speed 30 m/min, Max Speed up to 60 m/min
- Autonomous and guide less Navigation without the need for magnetic tape tracks
- Obstacle detecting sensor, Emergency stop, LED status, JIS (Japanese Industrial standard) approved
- Controlled remotely from a Tablet or PC
- Perfect for Food Industries, Pharma industries, Automotive, Logistics, E-Commerce, Warehouses and Mass Manufacturing set-ups

LM GUIDE



Linear guideways provides linear motion by re-circulating rolling elements between a profiled rail and a bearing block. Hiwin Corporation offers multiple linear guideway series, each featuring different options for sizes, loading capabilities, accuracies and more.

PRODUCT RANGE

- HG - Machine Tools
- EG - Automation Industry
- WE - Single Axes Equipment
- RG - High Rigidity Application
- MGN - Medical & Semiconductor
- QE - Highspeed Requirement
- CG - Cover Strip for Dustproof

BALL SCREW



- Ballscrews convert rotary motion into linear motion and are most commonly used in industrial machinery & precision machines
- Hiwin Corporation has the capability of producing JIS C0 class ground ballscrews, & DIN 5 class for precision rolled ballscrews. Ballscrew O.D. ranging from 4mm to 120mm, and with Dm-N values up to 220,000

PRECISION GROUND / ROLLED

- Super S series
- Super T series
- Mini Roller
- Rotating Nut (R1)
- Heavy Load Series (RD)

LINEAR MOTOR



- Max. acceleration 100 m/s²
- Max. speed 5 m/s
- Length up to 4,000 mm
- Equipped with coreless linear motors
- Slight inertia and fast acceleration
- No cogging
- Especially rigid aluminum frame with low profile
- Simple assembly

MOTION CONTROLLER



- 1½ axis to 64 axis controller
- Multi task programming using Trio basic software
- Support digital drives on RTEK, EtherCAT, SERCOS, Devicenet, CCLink & Profibus protocol
- Digital & Analog I/O Expansion module available
- Built-in Ethernet, CAN, RS232 & RS485 port
- Support SD card for memory data transfer

SCADA



- Client view support for mobile & PC
- Open real-time data connectivity : OPC, Modbus, BACnet, DDE Server
- Open offline data connectivity : SQL Server, Oracle, MySQL, MS Access Database
- Redundant SCADA & Communication Ports
- Google Maps and GPS Location Tracking • Support Customize Report
- Remote access to alarms, Data and E-mail alarms, SMS alarm notification
- Support LonWorks LNS and BACnet IP
- Ample Driver Support - Web Access support hundreds of devices
- Multi-touch gesture support • Web-enabled video and audio integration
- Special Tools for Scheduler and EMS System

INDUSTRIAL PANEL PC



- Embedded Industrial Touch Panel PC (TPC), Automation Panel PC(PPC), Rack mount chassis PC which can be used for widerange of industrial application
- Slim and compact 6 cm depth fanless design, Easy for space limited installation
- Varieties of Sizes available: 5.7",6.5",10",12",15",17",18.5" & 21.5"
- Varieties of Motherboard : SBC, Mini-ITX / Mirco ATX, ATX
- Varieties of Intel processors: Intel Atom, Dual core, Core2 Duo, Core2 Quad, Intel core i3,i5,i7, Celeron mobile
- Variety of OS support including : WES7, WinXP/XPe, WinCE and Linux
- Extremely rugged design with die-casting bezel & Aluminium housing
- Wide temperature range -20deg ~ 60deg for harsh environment
- Front panel: NEMA4, IP65 certified & 2KV Isolation protection

INDUSTRIAL EMBEDDED BOX PCS



- Varieties of Intel processors: Intel Atom, Dual core,Core2 Duo, Core2 Quad, Intel core I3, I5, I7, Celeron mobile
- 4 x GbE support IEEE 1588, 2 x USB 3.0 super-speed ports
- 4 x DI, 4 x DO, 1 x RS-232, 2 x RS-422/ 485
- DP + VGA dual display outputs
- Dual Power Inputs and Wide Temperature
- iDoor technology support with PCI Slot
- Extremely rugged design with die-casting bezel & Aluminium housing
- 2KV Isolation protection prevents damage from accidental shock, Surge or ground loops
- Front panel: NEMA4, IP65 certified
- IEC 61850-3 and IEEE 1613 Certified Substation computers
- Class I, Division 2 Certification for Oil & Gas

ADAM SERIES



DISTRIBUTED I/O MODULES & CONTROLLERS

- Support RS485, Ethernet, Wireless connectivity
- 1/2/6/8/16 channel Analog I/O modules
- 2/4/8/12/15/16 channel Digital I/O modules
- Temperature/Humidity Input modules
- Isolated Repeaters & convertors range (Rs232 to Rs485, USB toRS232/RS485/RS422, Fiberoptic to RS232/RS485/Rs422)
- Multiple protocol support : Modbus TCP, TCP/IP, UDP, HTTP, DHCP, Ethernet/IP, Profinet
- Intelligent control ability by Peer-to-Peer and GCL function
- Web language support: XML, HTML 5, Java Script
- Support Wide communication distance range upto 15Km
- Wide Temperature & Power Input Range
- Over Current and Temperature Shutdown
- Surge, EFT and ESD Protection

DATA ACQUISITION AND CONTROL CARDS



PCI/PCIE SERIES DAQ MODULES :

- Support PCI/PCIe/USB based DAQ card
- Max.96ch isolated DI/DO modules
- Max.250Ks/s high speed AI/AO modules
- 8-port PCI/PCIe Serial Communication Card(RS232/RS485/RS422) with Surge Protection
- Support PCI/PCIe based Motion card for machine automation

USB DAQ MODULES :

- Portable, Robust & Versatile
- Max. 200 kS/s, 16-bit, 16-ch Multifunction USB Module
- Max.48/24 TTL digital I/O modules
- Support DIN-rail/Wall/Panel/Vesa mount

Software Support





INDUSTRIAL COMMUNICATION

WLAN DEVICE SERVERS

- 1/2-port RS232/422/485 to 802.11b/g/n WLAN Serial Device Servers modules
- 1/2-port RS-232/422/485 to GPRS IP Gateways modules
- Dual SIM slots for connection redundancy

SERIAL DEVICE SERVER/MODBUS GATEWAY

- 1-port/2-port/4-port RS-232/422/485 Serial Device Server
- 2 x 10/100 Mbps Ethernet ports for LAN redundancy

INDUSTRIAL ETHERNET SWITCHES

- Max.16 High speed port Ethernet managed/unmanaged switches
- Redundant Dual 12 ~ 48 VDC power input and 1 relay output
- Class-1 Div-2 certified & IPv6 support



ROTARY ENCODERS

- Compact & Rugged Design
- **Resolution** : 100 ~ 480000 PPR
- **Operating Voltage** : 5V, 4.75~30V, 8~30V DC
- Available in **Shaft diameter** : 6mm, 8mm, 10mm
Hollow Shaft diameter : 8mm, 10mm, 12mm, 14mm, 15mm, 20mm, 25mm, 30mm....115mm
- **Output Type** : Open Collector, Push-pull, Line Driver, Programmable Encoder, Communication Encoder, Sin-Cosin Encoder
- Available with different communications CANopen, PROFIBUS, Device Net, SSI, Parallel Interface, EtherCAT
- Linear Encoder, Magnetic Encoder, Heavy duty Encoder, Cable-Pull Encoders Beringless Encoders with 16~740mm Hollow Shaft diameter



RESOLVERS

- Absolute Position & Velocity detection
- Angle Sensor that Converts Rotational Angles Into Electric Signals
- Input Voltage 4V, 5V, 7V, 10V AC rms
- Allowable rotating speed up to 40,000RPM
- Robustness against noise enables long-distance transmission
- Constant output against Moisture, Vibration, Dust, Temperature, Humidity



Application

- Industrial robots, Welding Positioner, Turn Table & Indexers, Automated Gantry, Machine Tool, Pipe Bending Machine

COMPONENT TYPE

RV Series

- RV Original (No main bearing)
- RV C (Hollow shaft)
- RV N
- RV E



GEARHEAD TYPE

RD Series

- RDS-E/RDS-C (Hollow shaft)
Right angle input type
- RDR-E/RDR-C (Hollow shaft)
Pulley input type
- RDP-E/RDP-C (Hollow shaft)

RS Series

- RS - 900A
- RS-320A

GH Series

- Flange Output
- Shaft Output

Application

- Industrial robots, Welding Positioner, Turn Table & Indexers, Automated Gantry, Machine Tool, Pipe Bending Machine

SERVO ACTUATOR - RV AF



Integrated Nabtesco precision gear & Servo Motors from Panasonic Corporation

- Simple, Compact, Worry-free Actuator
- Unified drive ensures safety, Comfort & a sense of security

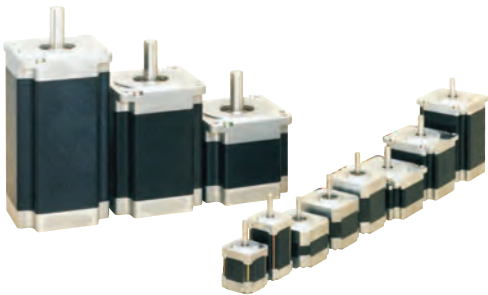
Application

- Industrial robots, Welding Positioner, Turn Table & Indexers, Automated Gantry, Machine Tool, Pipe Bending Machine

STEPPER MOTOR

2 PHASE & 5 PHASE

- Small driver and motor, yet high torque
- Fast response provides shorter system cycle time for repetitive operations
- Smooth drive is provided even with coarse resolution of one division (full-step) or two (half-step) settings
- Microstepping system
- Driving step angle is 1.8 degree/pulse. The dip switch enables changeover between full-step (1.8 deg) and half-step(0.9 deg) operation
- LED indication when a heatsink excessivel heats up



RTA STEPPER DRIVER



- **Range of Operating Voltage** : 24~85V DC & 110~230V AC
- **Range of Current** : 0.6~12.0 Amps
- **Microstepping Range** : 400, 800, 1600, 3200, 6400, 12800 steps/revolution
- Support CANopen, EtherCAT communication
- High Efficiency CHOPPER with MOSFET final stage output
- Electronic damping facility for further acoustic noise & mechanical vibrations reduction

TYPES OF STEPPING DRIVES



SCHNEIDER MAKE SWITCHGEAR PRODUCTS



- ACB
- MCCB
- SDFU
- MCB
- RCCB
- MPCB
- Power Contactor
- Control Contactor
- Thermal Overload Relay
- Capacitor Duty Contactor
- Power Factor Capacitor
- Push Button
- Selector Switches
- Indicating Led Lamp
- Digital Panel Meter



JAI KRISHNA BEARING HOUSE



Shop No. 205, 3rd Floor,
Aisha Bhawan, Behind 75 GB Road,
Near Farash Khana Chowk
Delhi-110006



011 - 45636050
+91 - 9650189559
+91 - 9899443130



sales@jaikrishnabearing.com